

For Sale

LAND



FARID CHATUR

(832) 685-2739

APEXREALTORS.COM

@apexrealtors **farid@apexrealtors.com**

**5444 WESTHEIMER RD. SUITE 1620,
HOUSTON, 77056**

UNIT SIZE

25.25 acres

PRICE

Call broker for pricing

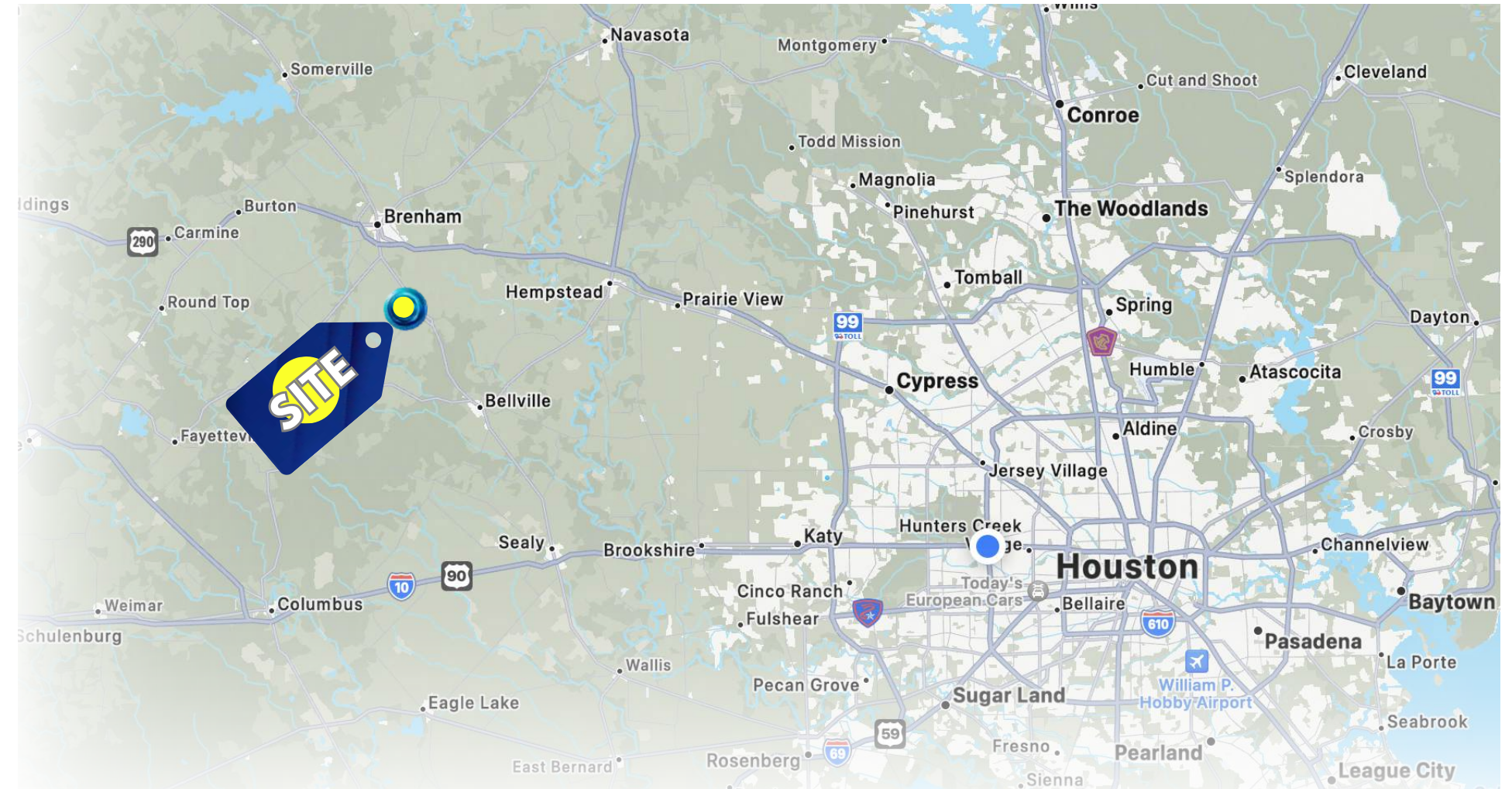
HIGHLIGHTS

- A beautiful 25+ acre ranch equipped with a barn for horses or other animals, featuring multiple stalls, a horse walker, a private well, a utility shed for feed and gear, and a cozy one-bedroom cabin.
- This breathtaking retreat is perfect for equestrian lovers or anyone who enjoys peaceful country living.
- The horse walker ensures your animals stay active, while the open pastures and scenic paths offer the ideal setting for riding or training.
- Surrounded by nature and wildlife, this property is also great for birdwatching, trail riding, or just relaxing outdoors.
- Ample guest parking and a separate storage shed add convenience and flexibility.
- A rare find for horse owners or those dreaming of a serene countryside escape.
- Whether you're an experienced rider or simply love the land, this is a special property with endless potential.

TRAFFIC COUNTS

University Drive 6,028VPD

Hempstead Highway 4,537VPD



DEMOGRAPHICS

Population

Median HH Income

Population Growth '23-'28

1 mile

401

\$34,999

↑25.94%

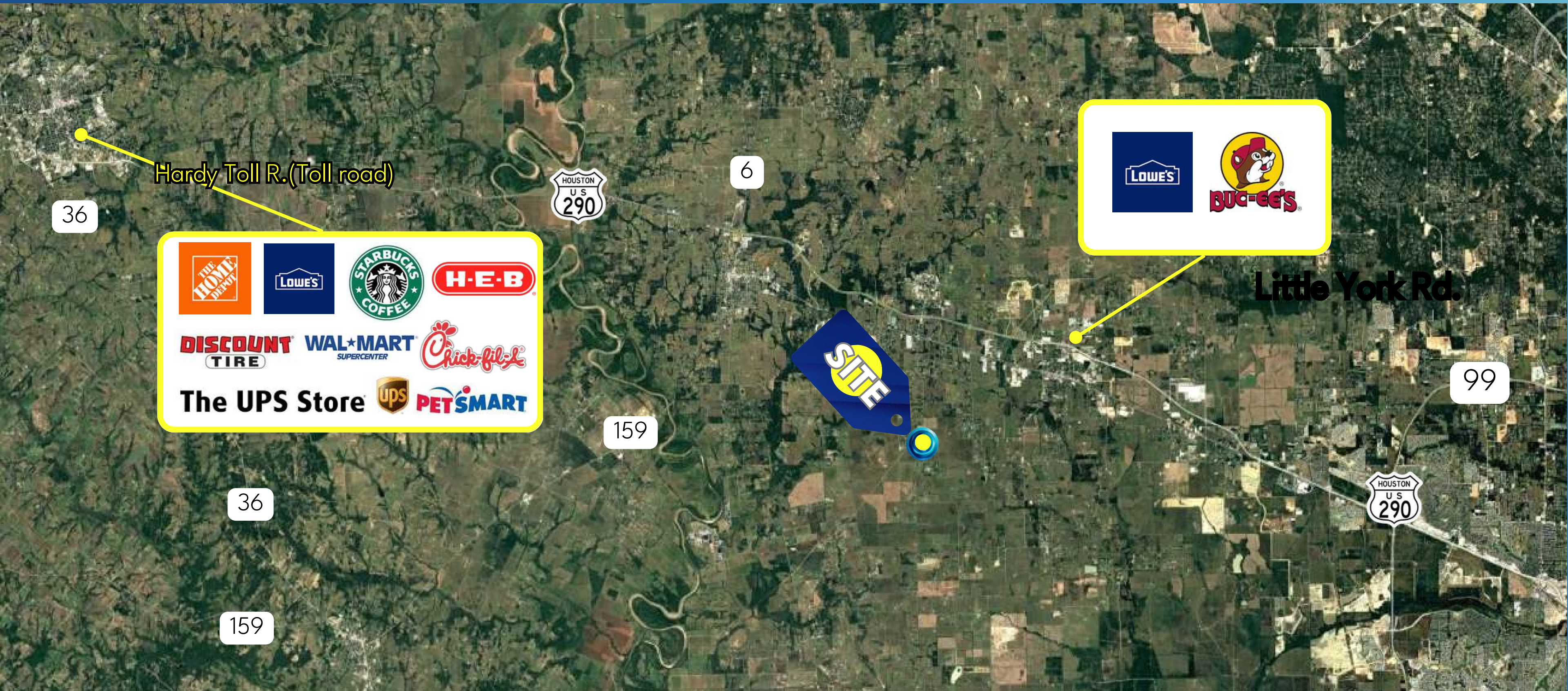
3 mile

4,308

\$33,857

↑24.89%









FARID CHATUR

(832) 685-2739

APEXREALTORS.COM

@apexrealtors **farid@apexrealtors.com**

**5444 WESTHEIMER RD. SUITE 1620,
HOUSTON, 77056**