

RETAIL

For LEASE



FARID CHATUR

(832) 685-2739

APEXREALTORS.COM

@apexrealtors **farid@apexrealtors.com**

5444 WESTHEIMER RD. SUITE 1620,
HOUSTON TX, 77056

SIZE

1500 SF

PRICE

Call broker for pricing

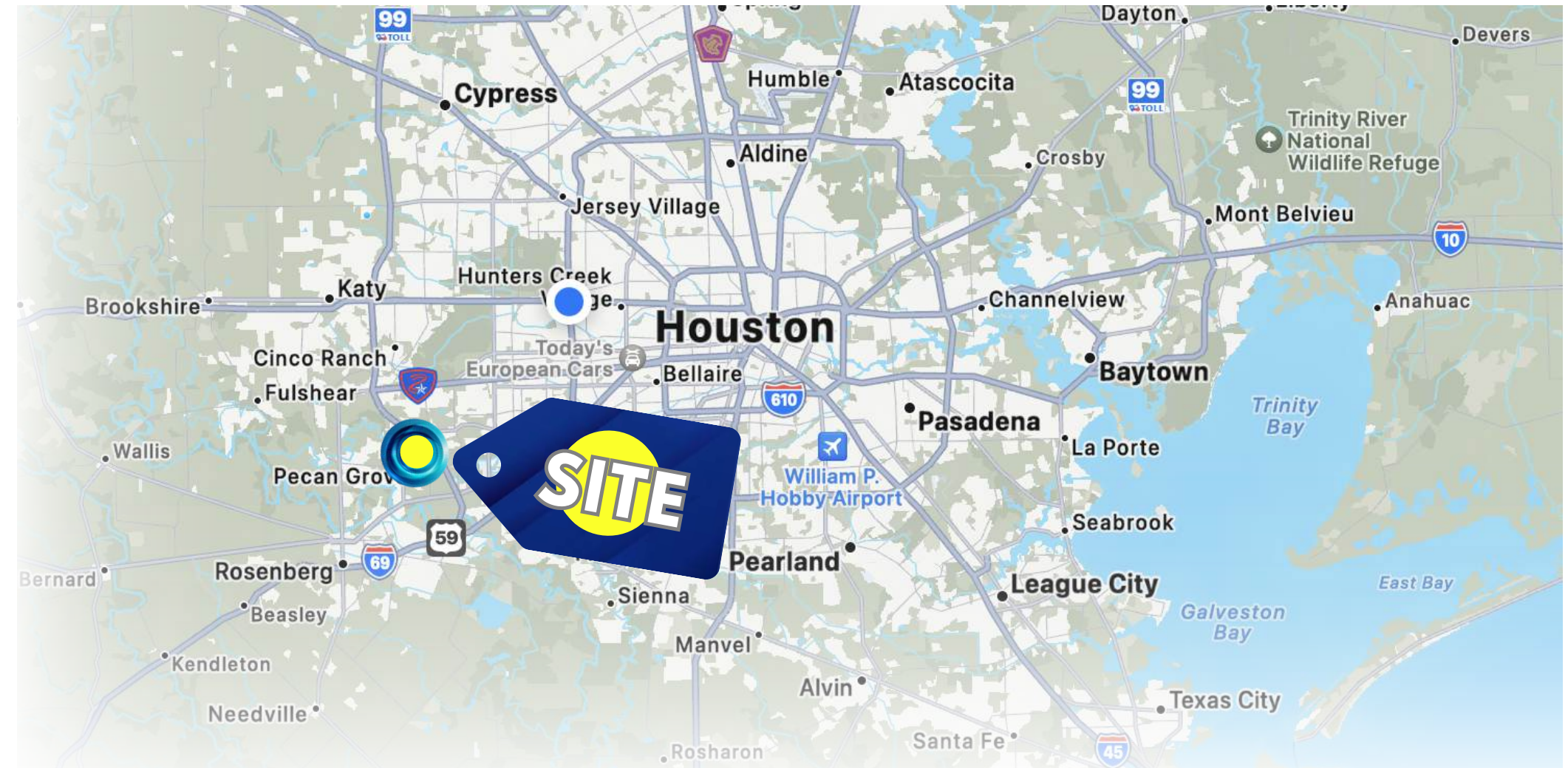
HIGHLIGHTS

- **Strategic Positioning:** Situated along the rapidly developing FM 2920 corridor, offering high visibility and accessibility in the northwest Houston area.
- **Proximity to Major Routes:** Close to major transportation routes, including Highway 290 and the Grand Parkway (SH 99), enhancing connectivity for businesses.
- **High Traffic Exposure:** Located in a growing commercial hub, benefiting from increased traffic and potential customer base.
- **Visibility:** The property's position along FM 2920 ensures excellent visibility to passing traffic, making it ideal for retail operations.

TRAFFIC COUNTS

Waller Tomball Road 12,535 VPD

FM 2920 Rd 9,638 VPD



DEMOGRAPHICS

Population

Median HH Income

Population Growth '24-'29

1 mile

1,930

\$65,679

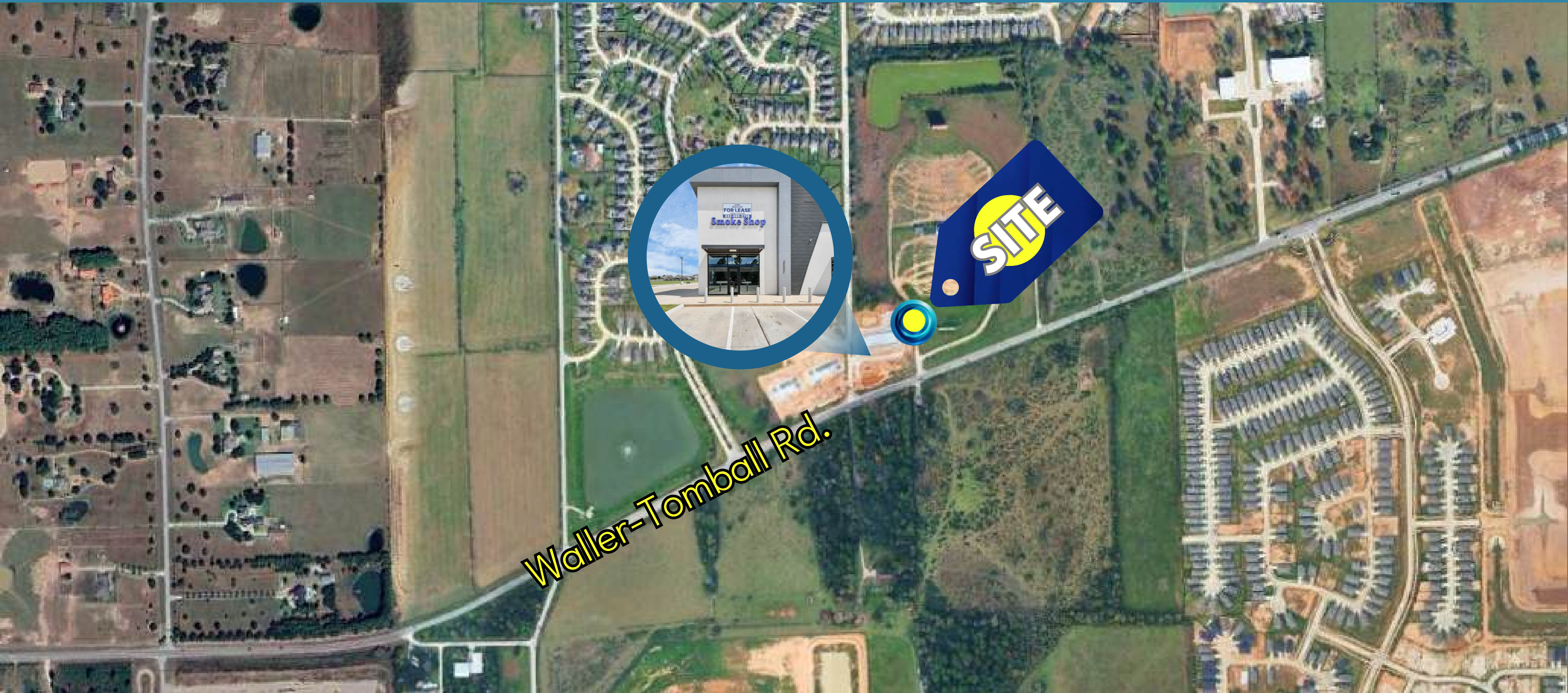
↑ 1.24%

3 mile

8,680

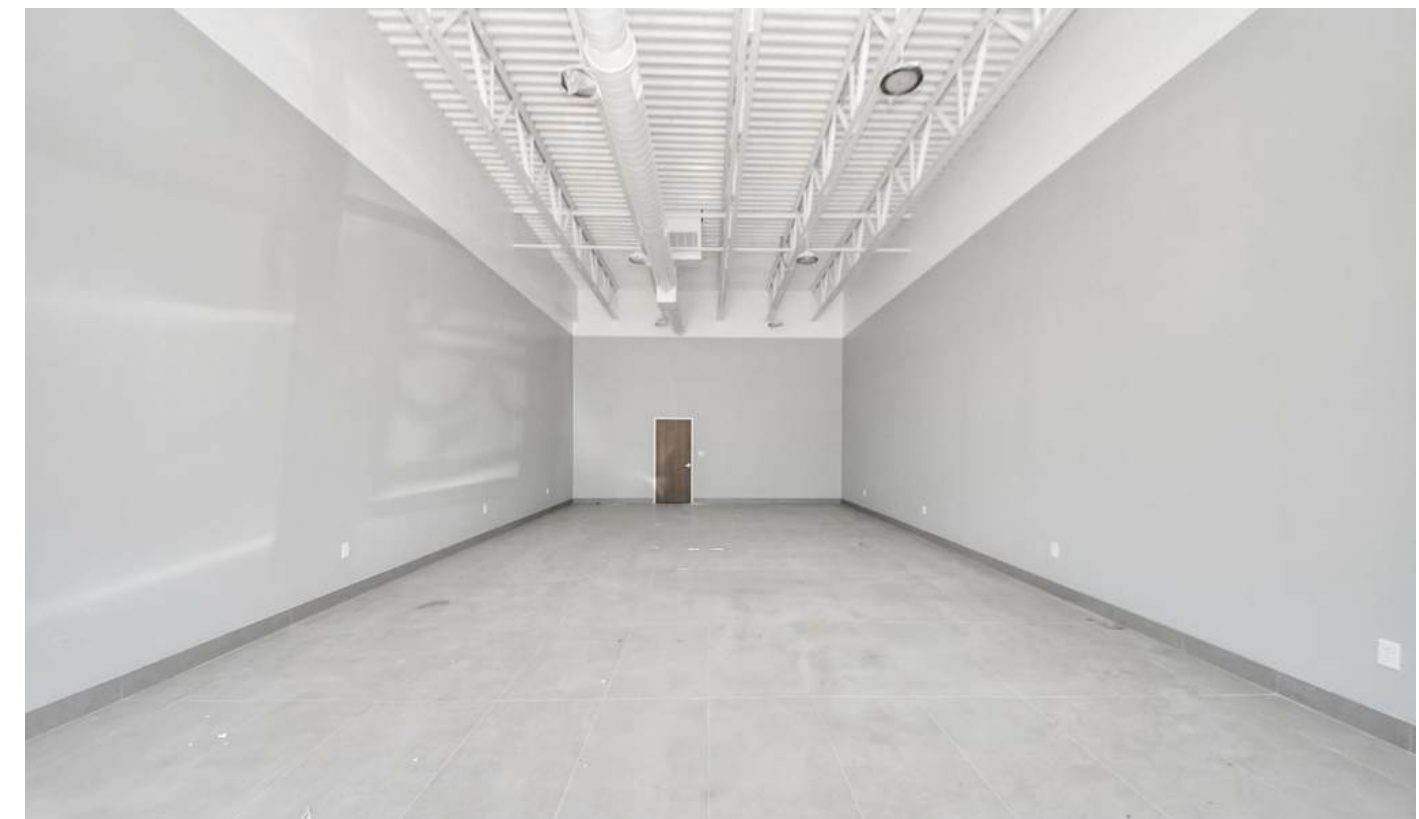
\$79,908

↑ 4.56%



Waller-Tomball Rd.





**APEX
REALTORS**

22550 FM 2920 RD,
Hockley, TX 77447



FARID CHATUR

(832) 685-2739

APEXREALTORS.COM

@apexrealtors **farid@apexrealtors.com**

5444 WESTHEIMER RD. SUITE 1620,
HOUSTON TX, 77056