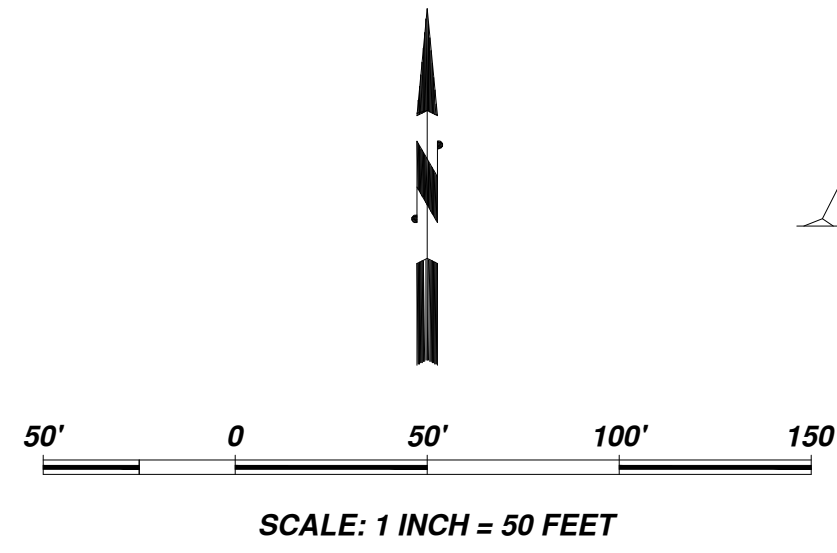


NOT FOR CONSTRUCTION OR DESIGN



RESERVE A
THE ENCLAVE AT
WOODBRIIDGE APARTMENTS
SLIDE NO. 2371
(F.B.C.P.R.)

VOSS ROAD
(100' R.O.W.)
(F.B.C.C.F. NO. 2002051293)

STATE HIGHWAY 6
(R.O.W. VARIES)
(VOL. 1821, PG. 976, F.B.C.D.R.)

SUREPOINT SELF STORAGE
IMPERIAL
PLAT NO. 20190024
(F.B.C.P.R.)

UNRESTRICTED
RESERVE "A"
47,771.89 SF
(1.0967 ACRES)

UNRESTRICTED
RESERVE "B"
49,865.38 SF
(1.1447 ACRES)

CHILDREN LIGHTHOUSE OF
IMPERIAL AT VOSS
PLAT NO. 20190142
(F.B.C.P.R.)

TRACT 3C
STATE OF TEXAS
DEPARTMENT OF TRANSPORTATION
PARTITION PLAT TRACT 3
SLIDE NO. 1832B-1833B
(F.B.C.P.R.)

F.B.I.S.D. HIGH SCHOOL
NO. 4 DIVISION
SLIDE NO. 915B
F.B.C.P.R.

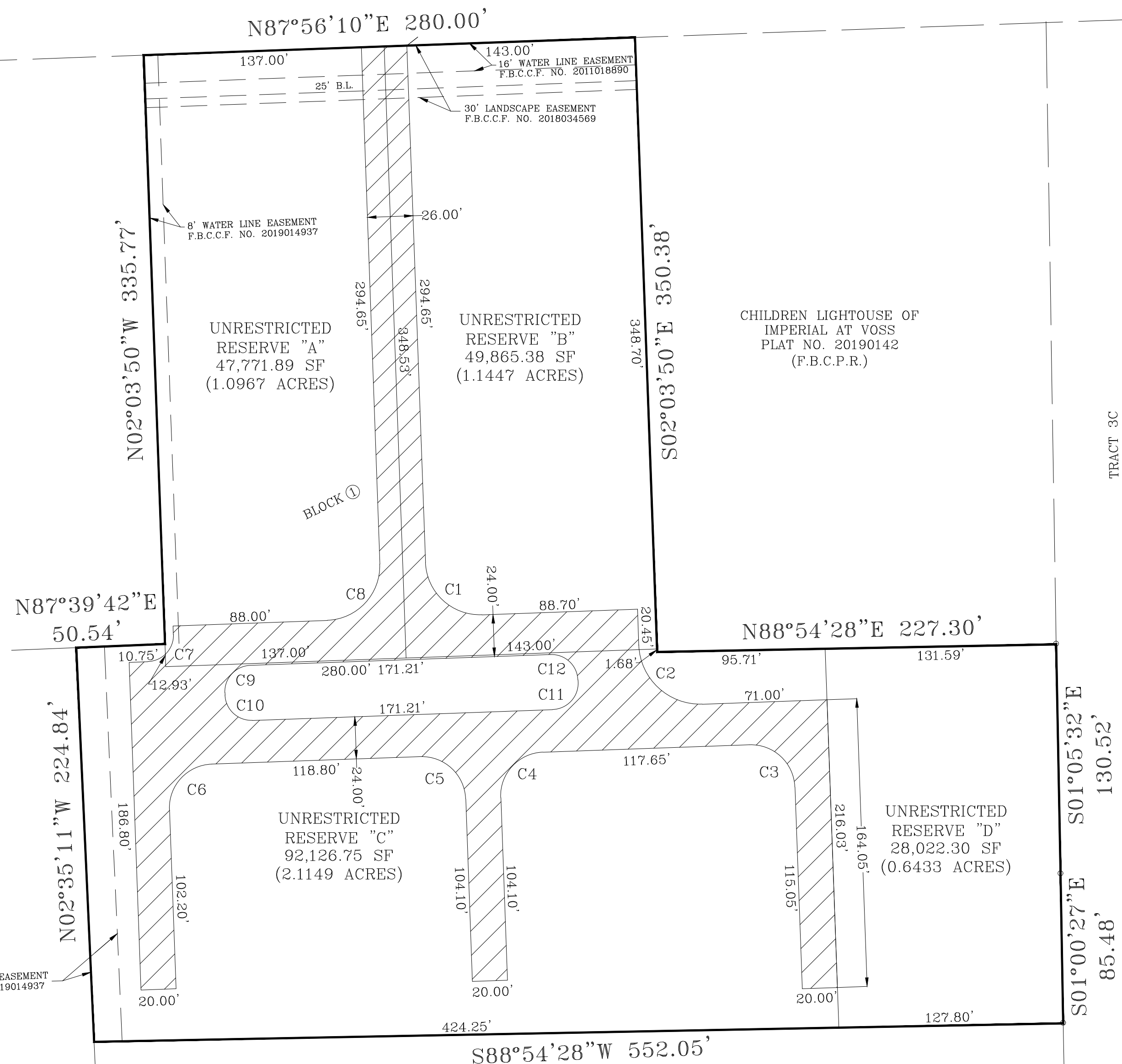
LIDL SUGAR LAND STORE
NO. US1260
PLAT NO. 20180161
(F.B.C.P.R.)

CALLED 25.809 ACRES
LIDL US OPERATIONS, LLC
F.B.C.C.F. NO. 2017070137
F.B.C.C.F. NO. 2017070138

16' WATER LINE EASEMENT
F.B.C.C.F. NO. 2019014937

PORTION OF
CALLED 25.809 ACRES
TRACT "G"
CHEROKEE SUGAR LAND, L.P.
F.B.C.C.F. NO. 20070888840
STATE OF TEXAS
PERMANENT SCHOOL FUND
F.B.C.C.F. NO. 2008070584

TRACT 3C
STATE OF TEXAS
DEPARTMENT OF TRANSPORTATION
PARTITION PLAT TRACT 3
SLIDE NO. 1832B-1833B
(F.B.C.P.R.)



CURVE CHART

CURVE	RADIUS	DELTA	ARC	BEARING	CHORD
C1	31.00'	90°00'00"	48.69'	S 47°03'50" E	43.84'
C2	35.00'	90°00'00"	54.98'	S 47°03'50" E	49.50'
C3	25.00'	90°00'00"	39.27'	N 47°03'50" W	35.36'
C4	25.00'	90°00'00"	39.27'	S 42°56'10" W	35.36'
C5	25.00'	90°00'00"	39.27'	N 47°03'50" W	35.36'
C6	25.00'	90°00'00"	39.27'	S 42°56'10" W	35.36'
C7	15.00'	90°00'00"	23.56'	N 42°56'10" E	21.21'
C8	31.00'	90°00'00"	48.69'	N 42°56'10" E	43.84'
C9	15.00'	90°00'00"	23.56'	S 42°56'10" W	21.21'
C10	15.00'	90°00'00"	23.56'	N 47°03'50" W	21.21'
C11	15.00'	90°00'00"	23.56'	N 42°56'10" E	21.21'
C12	15.00'	90°00'00"	23.56'	S 47°03'50" E	21.21'

PROPOSED ACCESS EASEMENT

BEING A 0.8844 ACRES (38,526.58 SF) OUT OF UNRESTRICTED RESERVE "A" OF SAINT PAUL PRESBYTERIAN CHURCH, ACCORDING TO THE MAP OR PLAT THEREOF RECORDED IN PLAT NO. 20190203 OF THE PLAT RECORDS OF FORT BEND COUNTY, TEXAS

JANUARY, 2026

SITE LAYOUT IS ONLY PRELIMINARY. FINAL DETERMINATIONS CAN BE MADE ONCE REVIEWED AND APPROVED BY CITY OF HOUSTON'S PLANNING DEPARTMENT AND PUBLIC WORKS.

OPTION 1

THE INTERFIELD GROUP, LLC
ENGINEERS, PROJECT & CONSTRUCTION MANAGERS
401 STUDEWOOD, SUITE 300 TEL. (713) 780-0909
HOUSTON, TEXAS 77007 FAX (713) 780-8550

(INTERFIELD PROJ. # 25082.00)